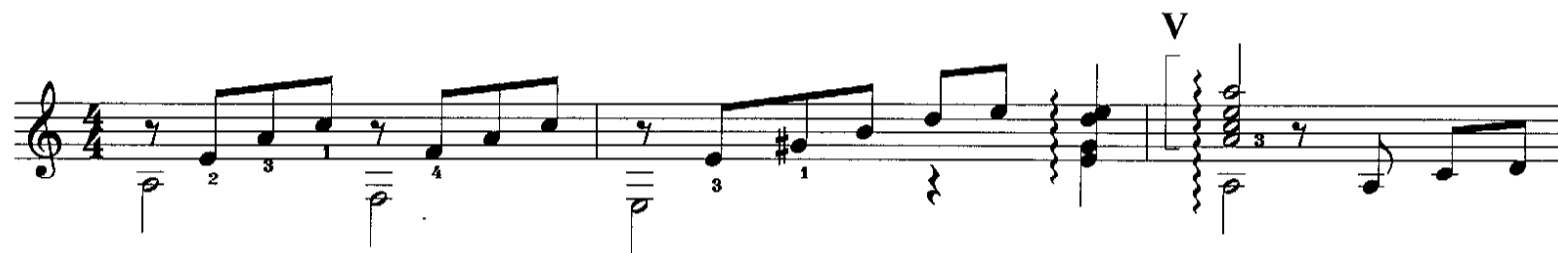


Lòng Mẹ

Nhạc: Y-Vân



The musical score for "The Rose Tree" is presented in a single system with a treble and bass staff. The key signature is one sharp (F#), and the time signature is 3/4. The score includes various musical notations such as chords, triplets, and fingerings. The piece is marked with a "VII" time signature, indicating a 7/8 time signature. The melody is primarily in the treble staff, while the bass staff provides a harmonic accompaniment. The score concludes with a final chord in the treble staff.